



## PROPERTY FEATURES

4 Bedrooms : 2.75 Bathrooms  
3,650 SF Home : 35,021 SF Lot  
MLS #1074306 : 2017 Taxes \$12,064

### SPRAWLING RAMBLER

- Welcoming **Foyer** with French doors, skylights and leaded glass side lights
- Sunken **Living Room** with bold columns, gas fireplace, granite wet bar and picture windows showcasing the lush setting
- The **Dining Room** is open to the living room - perfect for formal entertaining.
- Spacious **Kitchen** featuring hardwood floors, stunning slab granite, a Subzero, double wall ovens, 5-burner Thermador gas range, *whisper quiet* dishwasher, walk-in pantry, breakfast bar with pendant lighting and casual dining area with a planning desk
- Open to the kitchen above, the inviting **Family Room** features new carpet, high ceilings, built-in entertainment center, gas fireplace, built-in speakers, picture windows and glass French doors to the patio
- Generous **Bonus Room** featuring impressive, handmade bookshelves with a library ladder, high ceilings, gas fireplace and a glass door to the patio
- Serene **Master Suite** with picture windows, gas fireplace, ceiling fan, walk-in closet, a door to the deck and an updated tile  $\frac{3}{4}$  **bathroom** with a dual sink granite vanity and a large tile shower featuring two heads plus a rain shower
- Completing the bedroom wing are three additional **Bedrooms** and a luxurious marble 5-piece **Bathroom** featuring a heated/jetted tub, dual sink vanity and shower with two heads plus a rain shower
- Two updated granite **Powder Rooms**
- Updated **Laundry Room** with granite counters, cabinets, sink and closet

### OUTDOOR AMENITIES

- Inviting approach with professional landscaping and a circular drive
- Covered front porch with skylights
- Backyard fully fenced with black fencing to blend with the landscaping and 3 sets of gates, one provides direct access to Bridle Trails State Park with 482 acres of walking and riding trails
- Multilevel entertainment deck, recently rebuilt and re-stained, features built-in benches and a gazebo with a hot tub
- Patio with a fire pit and gas for a barbecue
- Picnic area • Lighted sport court with a basketball hoop • Level lawn
- Garden shed with new lifetime metal roof
- 6-zone sprinkler system • 5 hose bibs

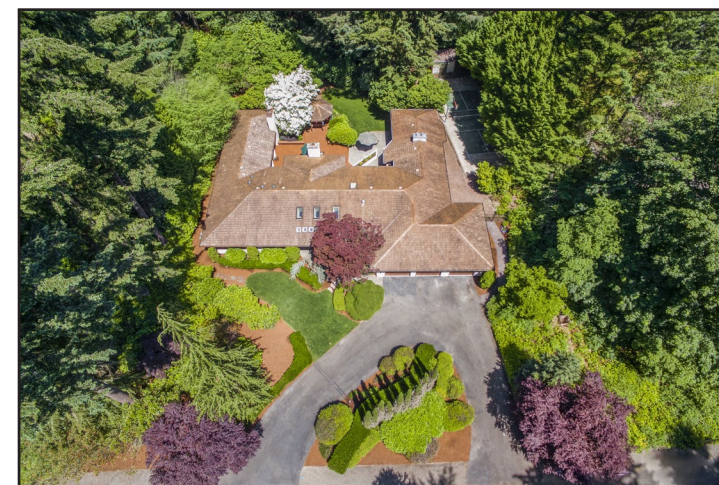
### ADDITIONAL HIGHLIGHTS

- Oversized 3-car garage • New gutters
- 2 recently serviced furnaces and 2 newer water heaters
- Shake roof treated annually
- 4 Fireplaces - 2 are Xtrordinair with remote controls
- Central vacuum
- Room in electric panel to support additions • Ample GFCI protection
- 20+ security lights around the exterior
- Independent cable/antenna in each room
- Two attic vents on each side to cool hallways

# Bridle Trails

## Chelsea Park

13306 NE 51st Pl, Bellevue



**A PEACEFUL RETREAT**, this impressive, level .8 acre estate displays gorgeous updates and is surrounded by mature Northwest landscaping for a private, resort-style experience. The ideal floor plan was thoughtfully designed to separate the entertaining areas from the quiet bedroom wing and flows effortlessly to the park-like setting for exceptional outdoor living. Its excellent location backs to access to Bridle Trails State Park and is convenient to downtown Bellevue, Microsoft, Kirkland and freeways for an easy commute.

**\$1,595,000**

[www.bethbillington.com](http://www.bethbillington.com) | [www.bridletrailstoday.com](http://www.bridletrailstoday.com) | [www.coldwellbankerpreviews.com](http://www.coldwellbankerpreviews.com)

Information from reliable sources but not guaranteed. \*Buyer to verify. Septic approved for 3 bedrooms.



**BETH BILLINGTON**  
YOUR REAL ESTATE RESOURCE



Coldwell Banker Bain  
Int'l President's Premier  
Top 1%, CRS, GRI  
425.450.5208  
beth@bethbillington.com





# EXCELLENT LIVABILITY

