



SPECIFICATIONS & FEATURES

- 4 Bedrooms
- 4 Bathrooms (2 full • 1 - ¾ • 1 powder)
- 3,500 SF Home
- 35,017 SF Lot
- 2017 Taxes: \$8,794
- MLS# 1091724

Entry - The covered front porch opens to a welcoming, two-story formal entry.

Living Room - A peaceful space, the formal living room features gorgeous, newly refinished hardwood floors, a fireplace, a slider to the deck and picture windows to showcase the natural, private setting.

Dining Room - Perfect for formal entertaining, the dining room is open to the living room and includes vaulted ceilings with skylights, a wet bar, a glass door to the kitchen and a slider to the deck.

Kitchen - The spacious, remodeled kitchen transitions seamlessly to the family room for a great room effect and features brilliant hardwood floors; granite tile countertops; island with breakfast bar; new cooktop; planning desk; pantry and a sunny eating nook with access to the deck.

Family Room - The inviting family room features vaulted ceilings, a gas fireplace, a ceiling fan and ample storage.

Master Suite - The generous master suite boasts picture windows; a fireplace; built-in air conditioning unit; and an exquisite bathroom featuring stunning cultured marble, a walk-in shower with two showerheads, soaking tub, skylights and a dual sink vanity.

Second **Bedroom Suite** with private ¾ **Bathroom**.

Recreation Room - Escape to the lower level recreation room with a wet bar, floor-to-ceiling brick fireplace and a slider to the back.

Two additional **Bedrooms** and a **Full Bathroom** can also be found on the lower level.

Outdoor Living - A private ¾ acre setting with landscaped garden beds and a house-long, ironwood entertainment deck

Additional Highlights -

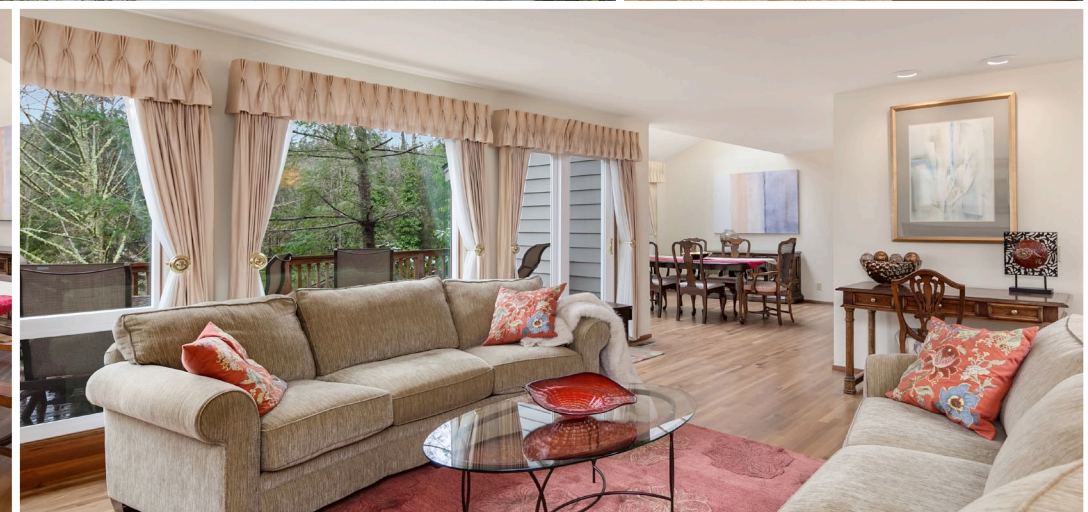
- Oversized two-car garage
- Newly refinished hardwood floors
- New carpet • New interior paint
- Expansive windows • Extensive skylights
- New windows on the main and upper levels approximately 10 years ago



COLDWELL BANKER BAIN
Int'l Society of Excellence
Top 1%, CRS, GRI
425.450.5208
beth@bethbillington.com

WINCHESTER ESTATES

3101 142ND PL NE, BELLEVUE



Bridle Trails

\$1,175,000

BETHBILLINGTON.COM • BRIDLETRAILSTODAY.COM



BETH
BILLINGTON
YOUR REAL ESTATE RESOURCE

COLDWELLBANKERPREVIEWS.COM

Information from reliable sources but not guaranteed. Buyer should verify.



Northwest Charm

